



Project Name

LAUREL WAY
RESIDENCE
1221 LAUREL WAY
BEVERLY HILLS, CA 90210

Sheet Title

HYDROZONE
MATRIX

Stamp/Approval

Set Title

- ☒ CHECK SET
- ☐ PRELIM BID SET
- ☐ FINAL BID SET
- ☐ PERMIT SET
- ☐ NOT FOR CONSTRUCTION
- ☐ CONSTRUCTION / FIELD SET

Date: 8-4-16

Project No. 510

Drawn By: GD

Checked By: DW

Scale: 1/8" = 1'-0"

Revisions Date/Description

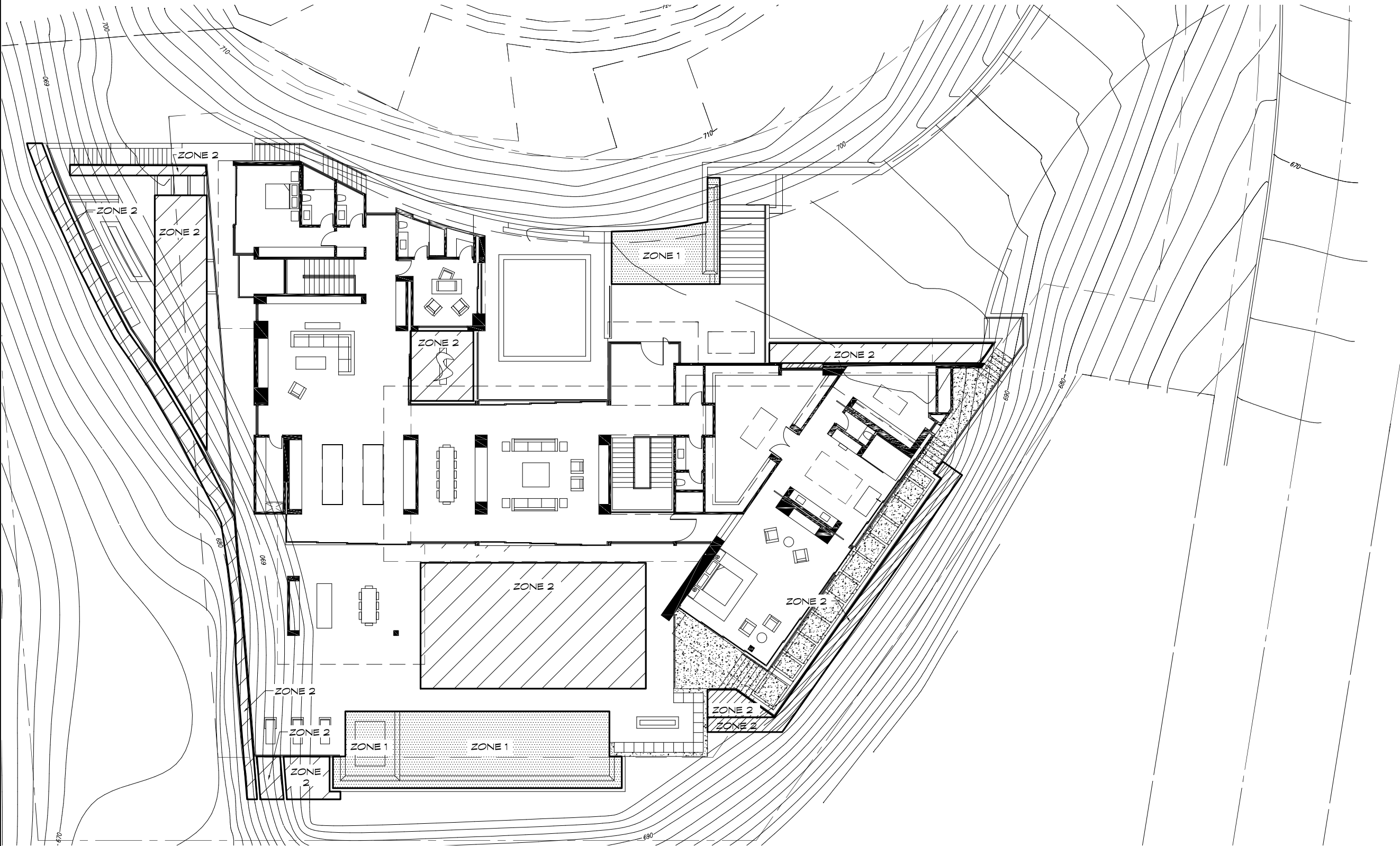
1

Sheet No.

L3.1

HYDROZONE MATRIX

1	2	3	4	5	6	7	8	9	10	11	12	13	14	15	16
ZONE	SQ FT	% OF TOTAL LS AREA	PLANT WATER REQ	PLANTING FORM	PRIMARY HYDROZONE BASIS	HYDROZONE DESCRIPTION	HYDROZONE EXPOSURE	IRRIGATION METHOD	IRRIGATION DEVICE MFG / MODEL / NUMBER	DEVICE FLOW RATE (GPM)	# OF HEADS OR EMITTERS	CALCULATED PRECIP RATE	MFG'S LISTED PRECIP RATE	ZONE GPM	ZONE PRESSURE
1	929	22.5	H	POOL / SPA / WATER FEATURE	SU	POOL / FOUNTAIN	2	AUTO FILL	N/A	N/A	N/A	N/A	N/A	N/A	N/A
2	3,200	77.5	L	SG SHRUBS, 360 TREE & GROUNDCOVER	SU	SHRUBS, TREE & GROUNDCOVER	2	DRIP	NETARM TECHLINE TLDL6-1610	.6	1,211	.38	.43 - .32	12.08	35
TOTAL	4,129														





Project Name

**LAUREL WAY
RESIDENCE**
1221 LAUREL WAY
BEVERLY HILLS, CA 90210

Sheet Title

**IRRIGATION
PLAN**

Stamp/Approval

Set Title

- ☒ CHECK SET
☐ PRELIM. BID SET
☐ FINAL BID SET
☐ PERMIT SET
☐ NOT FOR CONSTRUCTION
☐ CONSTRUCTION / FIELD SET

Date: 8-4-16

Project No. 510

Drawn By: GD

Checked By: DW

Scale: 1/8" = 1'-0"

Revisions | Date | Description

1		

Sheet No.

L2.1

GENERAL IRRIGATION NOTES

1. All main line piping and control wires under paving shall be installed in separate sleeves. Main line sleeve size shall be a minimum of twice (2x) the diameter of the pipe to be sleeved. Control wire sleeves shall be of sufficient size for the required number of wires under paving.
2. All lateral line piping under paving shall be PVC Schedule 40 pipe and shall be installed prior to paving or through sleeves.
3. Pipe sizes shall conform to those shown on the drawings. No substitutions of smaller pipe sizes shall be permitted, but substitutions of larger sizes may be approved.
4. Install all backflow prevention devices and all piping between the point of connection and the backflow preventer as per local codes.
5. Final location of the backflow preventer, valves and automatic controller shall be approved by the Landscape Architect.
6. 120 VAC electrical power source at controller location shall be provided by others. The irrigation Contractor shall make final connection from the electrical source to the controller.
7. All sprinkler heads shall be set perpendicular to finish grade unless otherwise specified.
8. The Irrigation Contractor shall flush and adjust all sprinkler heads and valves for optimum coverage with minimal overspray onto walks, streets, walls, etc.
9. This design is diagrammatic. All piping, valves, etc., are shown within paved areas for design clarification only and shall be installed in planting areas wherever possible. The Contractor shall locate all valves in shrub areas, approved by the Landscape Architect, and out of view.

SYMBOL	MANUFACTURER / MODEL / DESCRIPTION
	ELECTRIC REMOTE CONTROL VALVE
	NIBCO T-580-S6-R-66-LL STAINLESS STEEL BALL VALVE SHUT OFF VALVE
	SUPERIOR 3100 1-1/2" (MASTER VALVE) NORMALLY OPEN DESIGN, SOLID BRASS CONSTRUCTION, ELECTRIC.
	MASTER FILTER RAINBIRD GKCHK-100 TO BE LOCATED DIRECTLY DOWNSTREAM FROM BACKFLOW PREVENTER
	PRESSURE REDUCING VALVE PRESSURE LIMITED TO 65 PSI WILKENS 500
	FEBCO 825Y 1-1/2" REDUCED PRESSURE BACKFLOW PREVENTER
	RAINBIRD ESP-SMT4 4 STATION OUTDOOR CONTROLLER WITH WEATHER SENSOR
	FLOW SENSOR TORO-TFS-075 (2.7-23 GPM)
	NETARM TECHLINE DRIPLINE TLDL6-1810
	NETARM SOLID TUBING
	P.O.C POINT OF CONNECTION
	TREE TO BE IRRIGATED WITH RAINBIRD ROOT WATERING SYSTEM SEE DETAIL H, SHEET L2.2

IRRIGATION NOTE:

FINAL LOCATION OF ALL IRRIGATION EQUIPMENT INCLUDING REMOTE CONTROL VALVES TO BE DETERMINED BY LANDSCAPE ARCHITECT ON SITE .

LANDSCAPE CONTRACTOR IS RESPONSIBLE FOR THE CORRECT SIZING OF ALL IRRIGATION EQUIPMENT, INCL. BACKFLOW PREVENTION DEVICES, VALVES, PIPES ETC. BASED ON AVAILABLE STATIC PRESSURE AT THE WATER METER. IF CHANGES IN THE VALVE ZONING ARE REQUIRED, NOTIFY THE LANDSCAPE ARCHITECT.

VALVE SIZING AND ZONE GPM ARE ESTIMATIONS AND PROVIDED HERE FOR BID PURPOSES ONLY AND MAY CHANGE AS NEEDED.

SYM.	SIZE	BOTANIC / COMMON NAME	HEIGHT @ MATURITY
A		OMIT	
B	5G	PHORMIUM TENAX DUET	
C	5G	CORDYLINE HYBRIDS 'FESTIVAL GRASS' / DRACENA	
D	5G	AGAVE 'BLUE GLOW' / AGAVE	
E	FLATS @ 4' O.C.	DYMONDIA MARGARETAE / N.C.N	
F	36B	DRACENO DRACO / DRAGON TREE	15'-0"

